

- 4 MAI 2004

# FOX AU GALAXY

Paroles de  
Christiane FOMERAND  
et Carole MONTMAYEUR

Musique de  
Etienne SAUTON  
et Jean-Robert CHAPPELET

T° di FOX-TROT

INTRO

Musical notation for the intro, featuring a treble clef, a key signature of one sharp (F#), and a common time signature (C). The melody starts with a quarter note on G4, followed by a quarter note on A4, and then a quarter note on B4. The bass line consists of a quarter note on G2, followed by a quarter note on A2, and then a quarter note on B2. The piece concludes with a quarter note on G4. A stamp is placed over the notation, reading: S.A.C.E.M, 14. AVR. 2004, 225 Av. Charles de Gaulle, 92521 NEUILLY SUR SEINE CEDEX. The word 'Bass.' is written below the bass line.

REFRAIN

Musical notation for the first line of the refrain, featuring a treble clef, a key signature of one sharp (F#), and a common time signature (C). The melody starts with a quarter note on G4, followed by a quarter note on A4, and then a quarter note on B4. The bass line consists of a quarter note on G2, followed by a quarter note on A2, and then a quarter note on B2. The piece concludes with a quarter note on G4.

Un soup - çon de bon - heur Il

Musical notation for the second line of the refrain, featuring a treble clef, a key signature of one sharp (F#), and a common time signature (C). The melody starts with a quarter note on G4, followed by a quarter note on A4, and then a quarter note on B4. The bass line consists of a quarter note on G2, followed by a quarter note on A2, and then a quarter note on B2. The piece concludes with a quarter note on G4.

en faut peu pour êtr' heu - reux

Musical notation for the third line of the refrain, featuring a treble clef, a key signature of one sharp (F#), and a common time signature (C). The melody starts with a quarter note on G4, followed by a quarter note on A4, and then a quarter note on B4. The bass line consists of a quarter note on G2, followed by a quarter note on A2, and then a quarter note on B2. The piece concludes with a quarter note on G4.

Un a - mour plein le coeur U -

Musical notation for the fourth line of the refrain, featuring a treble clef, a key signature of one sharp (F#), and a common time signature (C). The melody starts with a quarter note on G4, followed by a quarter note on A4, and then a quarter note on B4. The bass line consists of a quarter note on G2, followed by a quarter note on A2, and then a quarter note on B2. The piece concludes with a quarter note on G4.

ne bel - le vie pour nous deux

Musical notation for the fifth line of the refrain, featuring a treble clef, a key signature of one sharp (F#), and a common time signature (C). The melody starts with a quarter note on G4, followed by a quarter note on A4, and then a quarter note on B4. The bass line consists of a quarter note on G2, followed by a quarter note on A2, and then a quarter note on B2. The piece concludes with a quarter note on G4.

Du so - leil, un ciel bleu Ja -

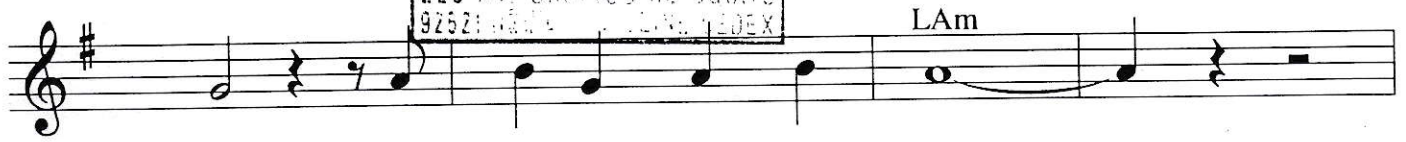
## Contacts

Etienne SAUTON - 3. rue du 8 mai 1945 - 28150 - LHOPITEAU-VOVES - Tél.: 02.37.99.11.80  
Jean-Robert CHAPPELET - 686, villa La Sonatine CD 925 - 73200 - GRIGNON - Tél./FAX : 04.79.32.60.04  
Christiane FOMERAND - 84, rue Emile Combes - 58200 - COSNE-SUR-LOIRE - Tél./FAX : 03.86.26.93.02  
Carole MONTMAYEUR - 686, villa La Sonatine CD 925 - 73200 - GRIGNON - Tél./FAX : 04.79.32.60.04

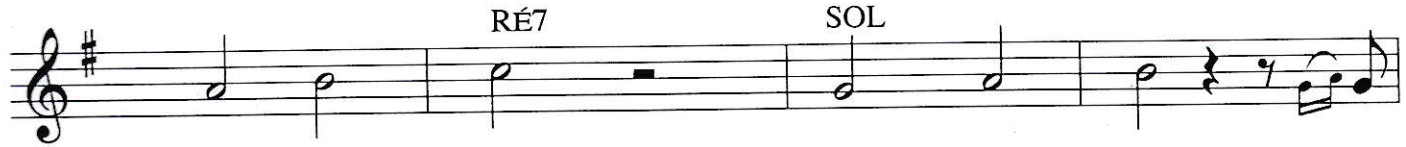
S.A.C.E.M

14. AVR. 2004

225 Av. Charles de Gaulle  
92521 Neuilly-sur-Seine Cedex



mais on ne pour - ra fair' mieux



Quand l'é - toil' brill' la nuit Oui!



c'est du bon - heur ga - ran - ti

RÉ7 SOL COUPLETS



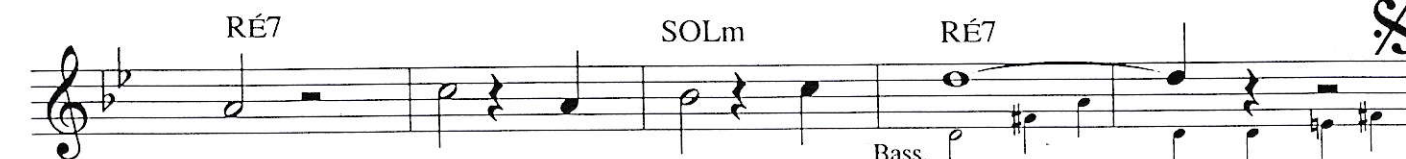
1 Mais un jour j'ai trou  
2 On peut bien tous les



vé Dans le Ga - la - xy  
deux Dan - ser c'est per - mis



Un' char - man - te beau  
Dans ce bal mer - veil



té Et je lui ai dit  
leux Douc' - ment je lui dis